

STATE OF FLORIDA  
COUNTY OF PALM BEACH

This plat was filed for  
record at \_\_\_\_\_, this  
day of \_\_\_\_\_, 1994,  
and duly recorded in  
Plat Book No. \_\_\_\_\_ on  
Pages \_\_\_\_\_ thru \_\_\_\_\_.

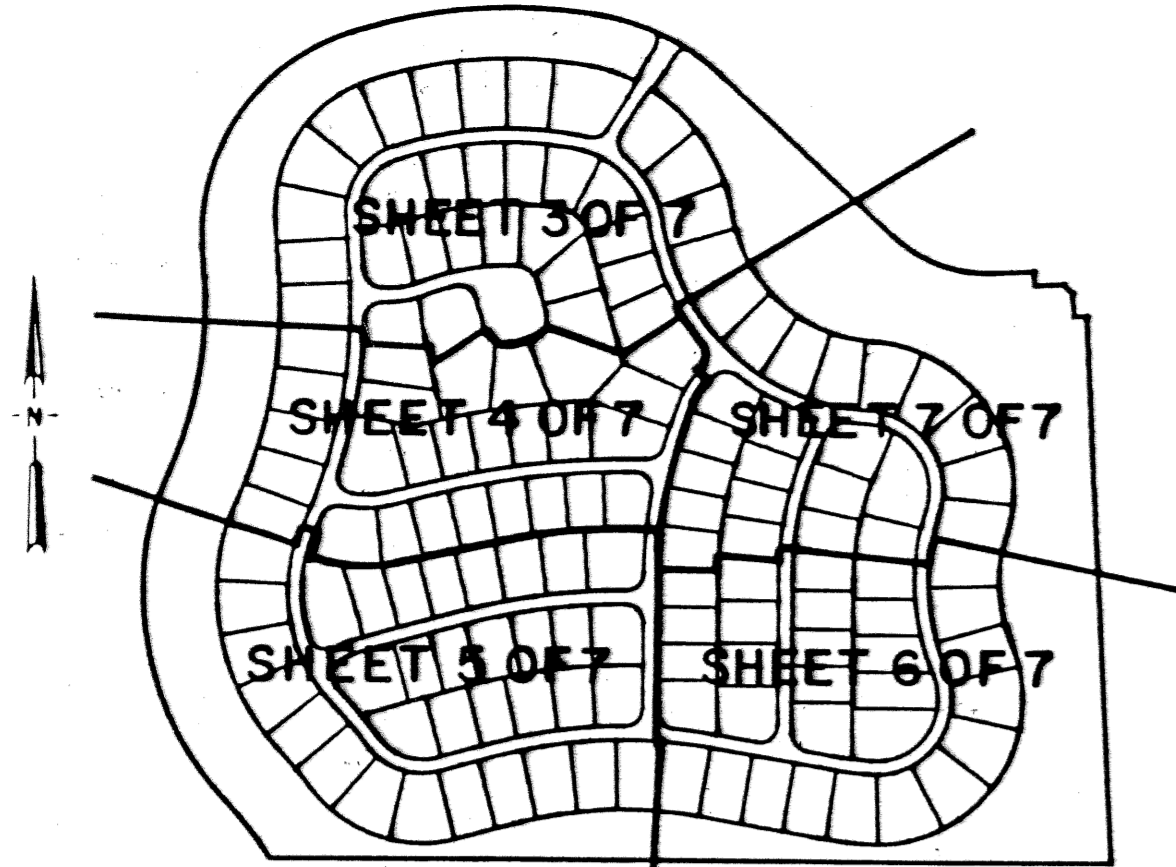
MILTON T. BAUER  
Clerk Circuit Court

By: \_\_\_\_\_

# OLIVE TREE - PARCEL 6B

A REPLAT OF PARCEL 6B OF  
OLIVE TREE - PHASE 6A OF THE RIVER BRIDGE P.U.D., (P.B. 71, PGS. 181 - 182)  
LYING IN SECTION 10, TOWNSHIP 44 SOUTH, RANGE 42 EAST  
CITY OF GREENACRES, PALM BEACH COUNTY, FLORIDA.  
JANUARY 1994

SHEET 2 OF 7

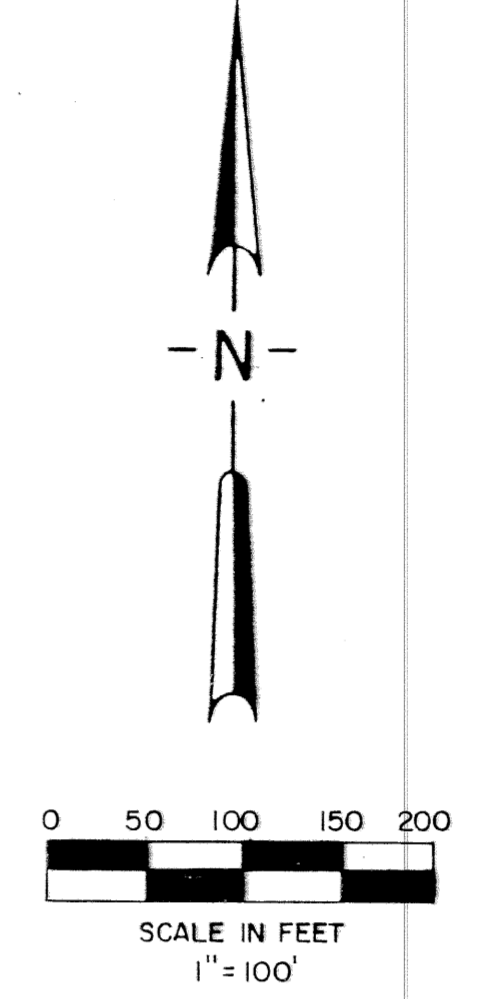


SHEET LOCATION MAP  
NO SCALE

C#	DELTA	RADIUS	LENGTH
C1	04°07'43"	396.00'	28.54'
C2	03°37'55"	396.00'	25.10'
C3	54°29'35"	164.00'	155.98'
C4	09°21'40"	376.00'	61.43'
C5	05°51'13"	624.00'	63.75'
C6	07°07'17"	826.00'	102.66'
C7	01°18'41"	4926.00'	112.74'
C8	06°09'10"	877.00'	94.18'
C9	14°06'45"	253.00'	62.32'
C10	04°16'44"	947.00'	70.72'
C11	02°36'24"	947.00'	43.09'
C12	15°46'39"	164.00'	45.16'
C13	09°21'49"	820.00'	134.01'
C14	20°58'55"	95.00'	34.79'
C15	12°32'14"	95.00'	20.79'
C16	33°59'18"	161.00'	95.51'
C17	00°53'04"	5370.00'	82.90'
C18	12°29'15"	95.00'	20.71'
C19	19°54'34"	161.00'	55.95'
C20	14°26'22"	396.00'	99.80'
C21	10°06'56"	396.00'	69.91'
C22	43°03'11"	30.00'	22.54'
C23	10°00'00"	200.00'	34.91'
C24	00°59'15"	194.94'	3.36'
C25	16°10'09"	290.00'	81.84'
C26	01°31'13"	194.94'	5.17'
C27	10°00'00"	200.00'	34.91'
C28	51°36'20"	30.00'	27.02'

T#	BEARING	DISTANCE
T1	N46°14'56"E	55.43'
T2	N64°10'38"E	51.60'
T3	S86°43'59"E	36.50'
T4	S67°57'20"E	15.11'
T5	S74°05'48"E	33.33'
T6	S88°13'21"E	51.90'
T7	N35°33'01"E	22.24'
T8	S35°33'01"W	29.27'



NOTE:  
SEE INDIVIDUAL SHEETS FOR COMPLETE LOT  
ANNOTATION AND EASEMENT LOCATIONS.

- LEGEND**
- D.E. DRAINAGE EASEMENT
  - U.E. UTILITY EASEMENT
  - P.B. PLAT BOOK
  - O.R.B. OFFICIAL RECORD BOOK
  - P.C. POINT OF CURVATURE
  - P.T. POINT OF TANGENCY
  - P.O.C. POINT OF COMMENCEMENT
  - P.O.B. POINT OF BEGINNING
  - P.C.P. PERMANENT CONTROL POINT
  - P.R.M. PERMANENT REFERENCE MONUMENT
  - R/W RIGHT-OF-WAY
  - REF. REFERENCE
  - SEC. SECTION
  - TWP. TOWNSHIP
  - RGE. RANGE
  - P.L.S. PROFESSIONAL LAND SURVEYOR
  - L.B. LICENSED BUSINESS
  - TYP. TYPICAL
  - N.R. NON-RADIAL

SUBDIVISION Olive Green - 6B  
BOOK 71 PAGE 2  
FLOOD ZONE FLOOD MAP #  
QUAD ZONING  
SE ZIP CODE  
PUD NAME Greenacres

**PETSCHÉ & ASSOCIATES, INC.**  
Professional Engineers - Land Surveyors - Development Consultants - Testing Services  
2581 Metrocentre Boulevard, Suite 6, West Palm Beach, Florida 33407 (407) 640-3800  
6799 Overseas Highway, Suite 7, Marathon, Florida 33050 (305) 743-5788

OLIVE TREE - PARCEL 6B				
SECTION 10, TOWNSHIP 44S., RANGE 42E. CITY OF GREENACRES, FLORIDA				
Drawn by: M.E.H.	Date: SEPT. 1993	SCALE: 1" = 100'	JOB NUMBER: 93-050-2	SHEET OF: 2 OF 7
Designed by:	Checked by: R. HAGLER			